



Quick Start Guide

Dialogic® BorderNet™ Session Border Controller (SBC)

Release 3.8.1

May 2019

Table of Contents

- 1. Introduction
 - 1.1 Purpose of this Document
 - 1.2 Glossary
 - 1.3 Contact Us
- 2. Initial Login
- 3. Create a Trusted Certificate
 - 3.1 Using Internet Explorer
 - 3.1.1 Adding the URL to Trusted Sites
 - 3.1.2 Installing the Certificate
 - 3.2 Using Mozilla Firefox
- 4. Provisioning

Copyright and Legal Notice

Copyright © 2014-2019 Dialogic Corporation. All Rights Reserved. You may not reproduce this document in whole or in part without permission in writing from Dialogic Corporation at the address provided below.

All contents of this document are furnished for informational use only and are subject to change without notice and do not represent a commitment on the part of Dialogic Corporation and its affiliates or subsidiaries ("Dialogic"). Reasonable effort is made to ensure the accuracy of the information contained in the document. However, Dialogic does not warrant the accuracy of this information and cannot accept responsibility for errors, inaccuracies or omissions that may be contained in this document.

INFORMATION IN THIS DOCUMENT IS PROVIDED IN CONNECTION WITH DIALOGIC® PRODUCTS. NO LICENSE, EXPRESS OR IMPLIED, BY ESTOPPEL OR OTHERWISE, TO ANY INTELLECTUAL PROPERTY RIGHTS IS GRANTED BY THIS DOCUMENT. EXCEPT AS PROVIDED IN A SIGNED AGREEMENT BETWEEN YOU AND DIALOGIC, DIALOGIC ASSUMES NO LIABILITY WHATSOEVER, AND DIALOGIC DISCLAIMS ANY EXPRESS OR IMPLIED WARRANTY, RELATING TO SALE AND/OR USE OF DIALOGIC PRODUCTS INCLUDING LIABILITY OR WARRANTIES RELATING TO FITNESS FOR A PARTICULAR PURPOSE, MERCHANTABILITY, OR INFRINGEMENT OF ANY INTELLECTUAL PROPERTY RIGHT OF A THIRD PARTY.

Dialogic products are not intended for use in certain safety-affecting situations.

Please see <http://www.dialogic.com/company/terms-of-use.aspx> for more details.

Due to differing national regulations and approval requirements, certain Dialogic products may be suitable for use only in specific countries, and thus may not function properly in other countries. You are responsible for ensuring that your use of such products occurs only in the countries where such use is suitable. For information on specific products, contact Dialogic Corporation at the address indicated below or on the web at www.dialogic.com.

It is possible that the use or implementation of any one of the concepts, applications, or ideas described in this document, in marketing collateral produced by or on web pages maintained by Dialogic may infringe one or more patents or other intellectual property rights owned by third parties. Dialogic does not provide any intellectual property licenses with the sale of Dialogic products other than a license to use such product in accordance with intellectual property owned or validly licensed by Dialogic and no such licenses are provided except pursuant to a signed agreement with Dialogic. More detailed information about such intellectual property is available from Dialogic's legal department at 6700 Cote-de-Liesse Road, Suite 100, Borough of Saint-Laurent, Montreal, Quebec, Canada H4T 2B5. **Dialogic encourages all users of its products to procure all necessary intellectual property licenses required to implement any concepts or applications and does not condone or encourage any intellectual property infringement and disclaims any responsibility related thereto. These intellectual property licenses may differ from country to country and it is the responsibility of those who develop the concepts or applications to be aware of and comply with different national license requirements.**

Dialogic, Dialogic Pro, Dialogic Blue, Veraz, Brooktrout, Diva, BorderNet, PowerMedia, PowerVille, PowerNova, MSaaS, ControlSwitch, I-Gate, Mobile Experience Matters, Network Fuel, Video is the New Voice, Making Innovation Thrive, Diastar, Cantata, TruFax, SwitchKit, Eiconcard, NMS Communications, SIPcontrol, Exnet, EXS, Vision, inCloud9, NaturalAccess and Shiva, among others as well as related logos, are either registered trademarks or trademarks of Dialogic Corporation and its affiliates or subsidiaries. Dialogic's trademarks may be used publicly only with permission from Dialogic. Such permission may only be granted by Dialogic's legal department at 6700 Cote-de-Liesse Road, Suite 100, Borough of Saint-Laurent, Montreal, Quebec, Canada H4T 2B5. Any authorized use of Dialogic's trademarks will be subject to full respect of the trademark guidelines published by Dialogic from time to time and any use of Dialogic's trademarks requires proper acknowledgement.

The names of actual companies and products mentioned herein are the trademarks of their respective owners.

This document discusses one or more open source products, systems and/or releases. Dialogic is not responsible for your decision to use open source in connection with Dialogic products (including without limitation those referred to herein), nor is Dialogic responsible for any present or future effects such usage might have, including without limitation effects on your products, your business, or your intellectual property rights.

Revision History

Revision	Release Date	Notes
1.0	March 2012	SRA Release
1.1	July 2013	Release 3.1
1.2	December 2013	Release 3.2
1.3	February 2016	Release 3.3 - editing and styling
1.4	February 2016	Release 3.4
1.5	May 2016	Release 3.4.1 - After the installation remote access is allowed. Added a note to the Mozilla Firefox section.
2.0	July 2016	Release 3.5.0
2.1	April 2017	Release 3.6.0
3.0	September 2017	Release 3.7.0
4.0	March 2018	Release 3.7.5
5.0	September 2018	Release 3.7.6, editing.
6.0	December 2018	Release 3.8.0
7.0	May 2019	Release 3.8.1

1. Introduction

1.1 Purpose of this Document

This document describes a Quick Start process for using the **BorderNet Session Border Controller (SBC)**.

To start working with the BorderNet SBC, follow the below steps:

- [Initial Login](#)
- [Making Certificate Trusted](#)
- [Configuration and Provisioning](#)

1.2 Glossary

For the purposes of this document the following abbreviations apply:

Abbreviation	Meaning
ACL	Access Control List
SBC	Session Border Controller
VLAN	Virtual Local Network

1.3 Contact Us

For a list of Dialogic locations and offices, please visit: <https://www.dialogic.com/contact.aspx>.

2. Initial Login

After the installation and deployment are complete, the BorderNet SBC can be accessed via a web browser.

The following browsers are supported:

- **Internet Explorer** (v8,v9,v10) Note: IE 11 is not supported.
- **Mozilla Firefox** (v5 and above)
- **Google Chrome**

For first-time access, the host running the browser must be in the same subnet as the BorderNet SBC System Management IP address.

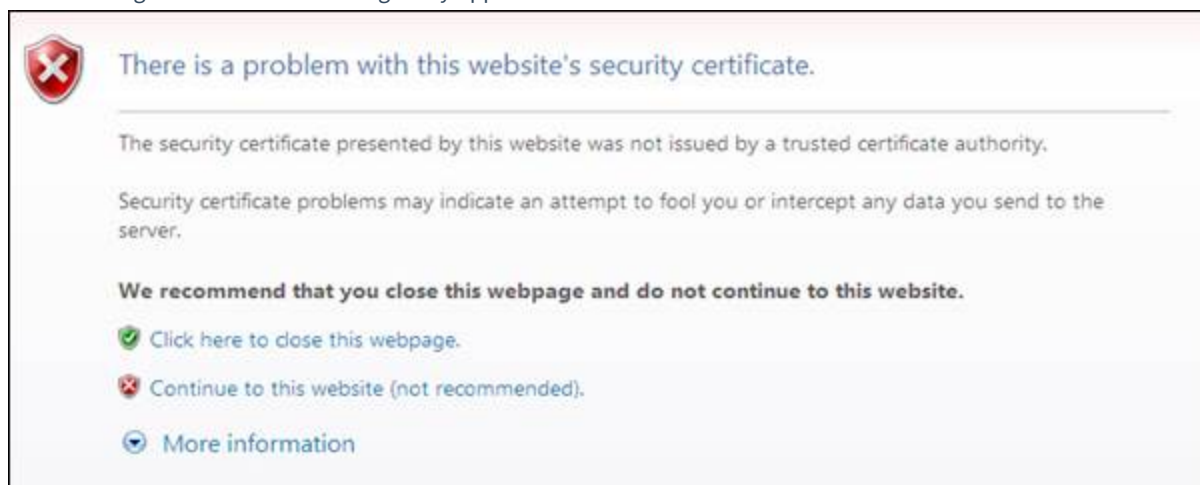
Notes:


You must obtain the System Management IP address assigned during the deployment process prior to beginning the following procedure.

All **http://** requests are automatically redirected to **https://** requests.

→ To access to the BorderNet SBC:

1. Enter the System Management IP address into a browser.
2. The following certificate error message may appear:



3. Select  **Continue to this website.**
4. Login as the System Administrator with the following credentials:
5. Username: **sysmanager**
6. Password: **SYSMGR**

Username:

Password:

[Forgot Login / Password ?](#)

- 7.
8. Click **Submit**.
9. The BorderNet SBC **Dashboard** screen appears.

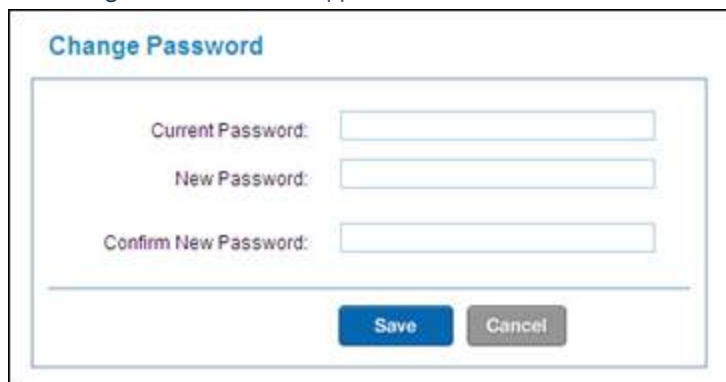
The screenshot displays the Dialogic BorderNet 4000 SBC Dashboard. At the top, there are navigation tabs for 'Diagnostics', 'Application', 'System', and 'Software', with 'System' currently selected. The dashboard is divided into several sections:

- Session Capacity:** A donut chart shows 0% utilization. A line graph plots 'Sessions per second' over time intervals from 1-60(sec) to 1.
- System Performance:** A table shows metrics for Signaling, Media, and Bandwidth. Total Sessions and Sessions per sec are both 0. Rx Media and Tx Media are also 0.
- Platform:** A detailed view of system components including PS 1, PS 2, HD 1, HD 0, and FAN 1-4, with various status indicators and percentage values.
- Session Link Utilization:** A line graph showing utilization for different Ethernet interfaces (EIn11, EIn7, EIn10, EIn6, EIn9, EIn5, EIn8, EIn4) over time intervals.

The footer contains the text '©Copyright 2012 Dialogic Inc. All rights reserved.', the website 'dialogic.com', and the Dialogic logo.

10. From the **System** tab drop-down menu, select **User Management >> Change Password**.

11. The **Change Password** screen appears.



The screenshot shows a web interface titled "Change Password". It contains three text input fields labeled "Current Password:", "New Password:", and "Confirm New Password:". Below these fields are two buttons: a blue "Save" button and a grey "Cancel" button.

12. Enter **SYSMGR** in the **Current Password** field.
13. Enter a new password in the **New Password** field.
14. Copy this password into the **Confirm New Password** field.
15. Click **Save**.
16. The initial login is complete.

Note:

After the installation the incoming packets are not blocked, to allow remote access. You are recommended to prepare the access list and block the relevant ports. See "User-Defined ACLs" in the *BorderNet SBC Provisioning Guide* for instructions on creating ACLs.

3. Create a Trusted Certificate

When you enter the BorderNet SBC URL into a browser, a security warning appears about the certificate. This warning occurs because the BorderNet SBC contains a self-signed Digital Certificate. The BorderNet SBC URL must be added to the browser as a trusted, secure site to resolve the certificate error.

The following procedures explain how to create a trusted certificate on the browser used to access the BorderNet SBC.

The procedure you follow depends on which browser you are using:

- [Internet Explorer](#)
- [Mozilla Firefox](#)

3.1 Using Internet Explorer

- For **Internet Explorer 9**, follow the complete procedure below.
- For **Internet Explorer 8**, proceed directly to **3.1.2 Installing the Certificate** below.

3.1.1 Adding the URL to Trusted Sites

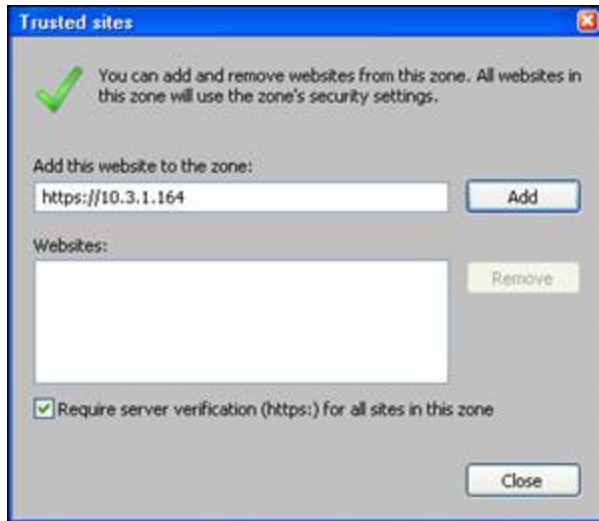
→ To add the BorderNet SBC URL to Trusted Sites, on Internet Explorer 9:

1. Open a browser window in Internet Explorer 9.
2. From the main menu, select **Tools >> Internet Options >> Security**.
3. Select **Trusted Sites**.



- 4.
5. Click the **Sites** button.

- The **Trusted Sites** window opens.

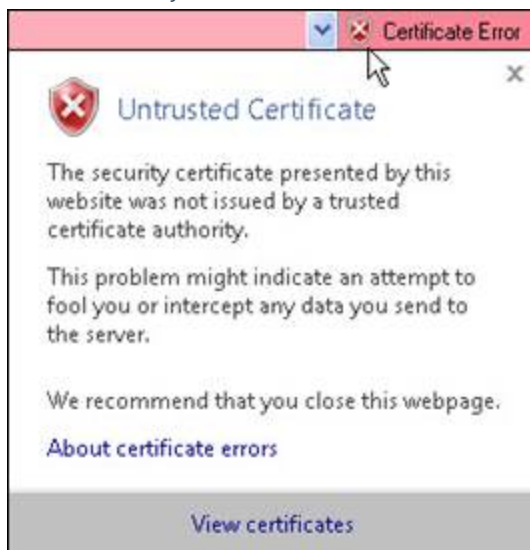


-
-
-
-
-
-
-
- In the **Add this website to the zone** field, enter the BorderNet SBC web URL.
- Click the **Add** button.
- Click **Close**.
- Proceed to the [Installing the Certificate](#) procedure.

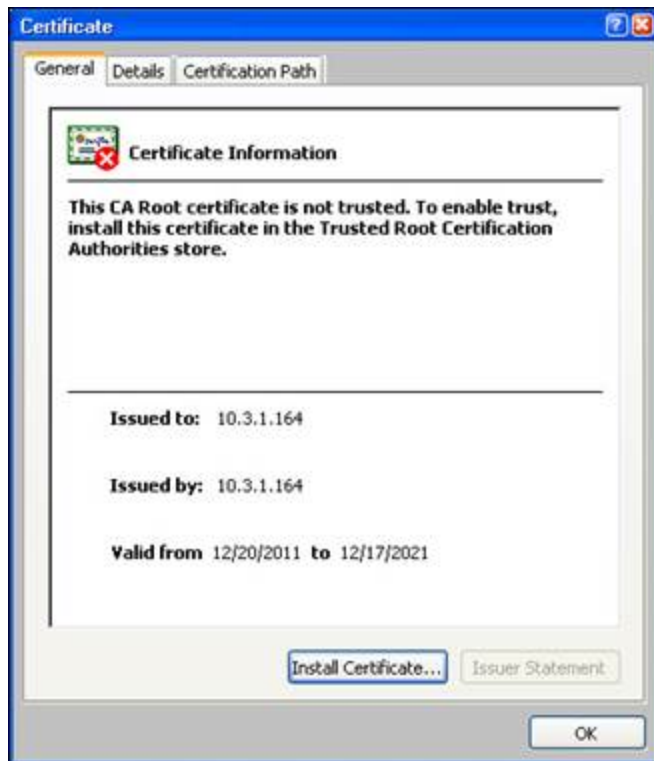
3.1.2 Installing the Certificate

→ To complete the certificate installation:

- Enter the BorderNet SBC URL into the Internet Explorer browser.
- Select **Continue to this website**.
- Click the security icon next to the **Certificate Warning**.



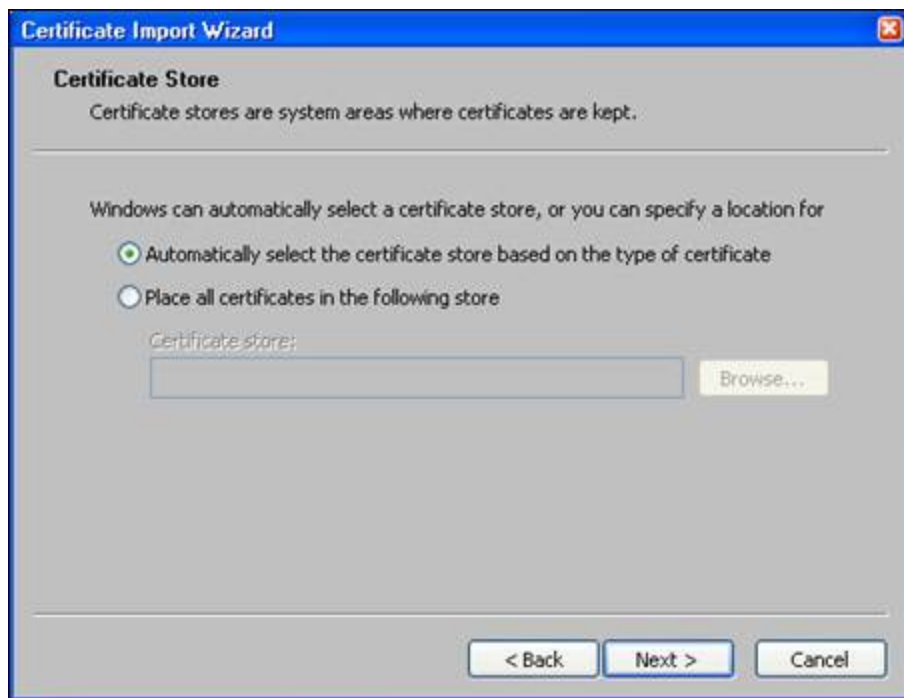
-
-
-
- Click **View Certificates**.
- The **Certificate** window opens in the **General** tab.



- 7.
8. Verify that the **Certificate Information** is issued to the BorderNet SBC IP address.
9. Click **Install Certificate**.
10. Click **Next**.
11. The **Certificate Import Wizard** screen appears.



- 12.
13. Click **Next**.
14. The **Certificate Store** screen appears.



- 15.
16. From the Certificate Store, select the button **Automatically select the certificate based on the type of certificate**.
17. Click **Next**.
18. The **Completing the Certificate Import Wizard** screen appears.



- 19.
20. Click **Finish**.
21. A **Security Warning** appears.



- 22.
23. Click **Yes** to save the certificate.
24. The BorderNet SBC Security Certificate now works with Internet Explorer as a trusted site.

3.2 Using Mozilla Firefox

Use the following procedure to add the BorderNet SBC URL to the **Mozilla Firefox Exception List**.

For Firefox versions >34, before performing the steps below:

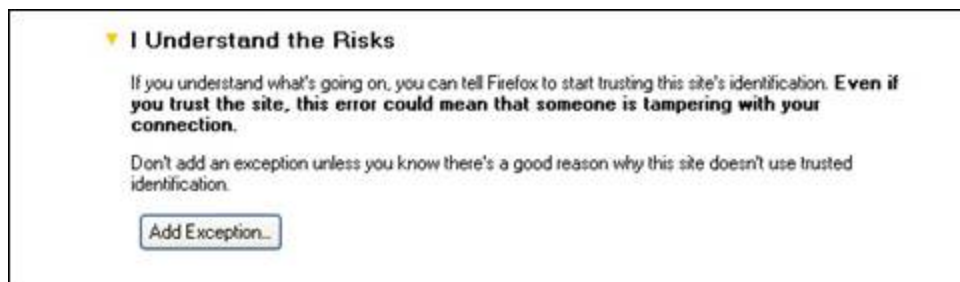
1. Go to the URL **about:config**.
2. In the search line enter **security.ssl3.dh**.
3. Double click on **security.ssl3.dhe_rsa_aes_128_sha**.
4. Set the **security.ssl3.dhe_rsa_aes_256_sha** to **false**.

→ To complete the certificate installation:

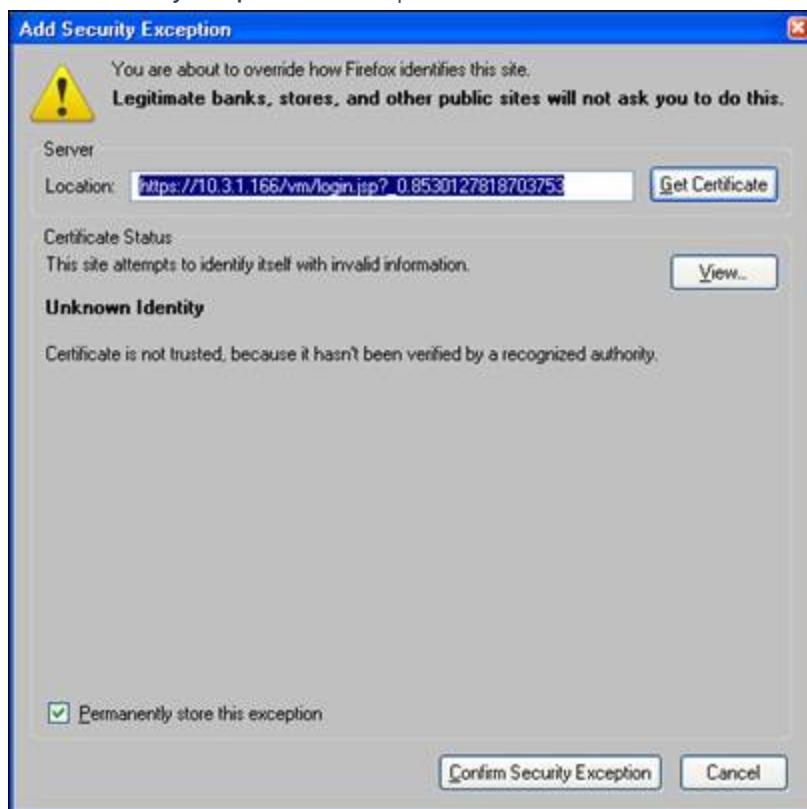
1. Open a browser window and enter the BorderNet SBC URL.
2. The following warning appears:



- 3.
4. Select **I Understand the Risks**.
5. The following dialog opens:



- 6.
7. Click Add Exception.
8. The Add Security Exception window opens.



- 9.
10. Verify that the **Permanently store this exception** box is checked.
11. Click **Confirm Security Exception**.
12. The BorderNet SBC security certificate is permanently stored with Mozilla Firefox as a trusted certificate.
13. The BorderNet SBC login screen appears.

4. Provisioning

Once the initial login is complete, the BorderNet SBC can be configured for user access and provisioned for carrying traffic.

→ To enable traffic turn-up, follow this procedure:

1. Create VLANs.
2. Create SIP interfaces.
3. Create SIP peers.
4. Associate interfaces to peers.
5. Create static routes.

Refer to the *BorderNet SBC Provisioning Guide* for additional information and procedures for each of these steps.